



COLLABORATION

The development and initial implementation of the Mississippi Water Stewards program is supported by funds from the U.S. Environmental Protection Agency – Gulf of Mexico Program as part of cooperative agreement no. MX-00D88419. The MSWS program was developed in partnership with the Alabama Water Watch Program and program staff. The original proposal is Mississippi Water Stewards: Expanding community-based water monitoring throughout Gulf of Mexico watersheds.

CONTACT US

Mississippi Water Stewards Program
775 Stone Blvd
P.O. Box 9690
Mississippi State, MS 39762
Office: 662.325.7491
beth.baker@msstate.edu
Visit our website via the QR code below:



MISSISSIPPI WATER STEWARDS



OUR HISTORY

The Mississippi Water Stewards (MSWS) program started in 2021 by adapting a proven community-based watershed stewardship outreach and education model from Alabama Water Watch to protect and restore water resources. The MSWS program provides water resource education and outreach activities that build stewardship, citizen monitoring networks, and educate citizens about water resources and best management practices.

The long-term vision of the MSWS program is to have the capacity in every watershed and coastal area in Mississippi for citizens to understand local water issues, respond via monitoring if necessary, and lead local efforts to protect water resources through scientifically sound, actionable solutions.

OUR GOALS

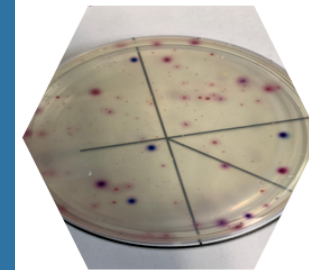
- **Educate** citizens about water issues in Mississippi and the world.
- **Train** citizens to use scientifically valid methods to gather credible water quality information using quality-assured protocols.
- **Build capacity** in local communities to have a positive impact by using monitoring information for environmental education, watershed restoration and protection efforts, and involvement in watershed stewardship.

WHY BECOME A WATER STEWARD?

"I have lived around water for most of my life, and it is important to me that the water quality is protected. As a recent retiree, I am in a favorable position to participate in programs that give back to the community."

-2021 MS Water Steward

CERTIFICATIONS



Bacteriological Monitoring

Chemistry Monitoring



Biomonitoring

